

■ EUL-RG-LED

■ LED Elevated Runway Guard Light



## Compliance with Standards

CAAC: AC-137-CA-2015-03& 01

SAC: GB/T 7256

ICAO: Annex 14, Volume I

IEC: TS 61827

FAA: AC 150/5345-46 & EB 67

NATO: STANAG 3316

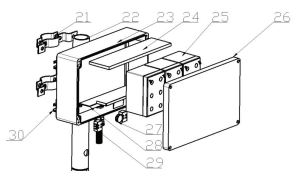
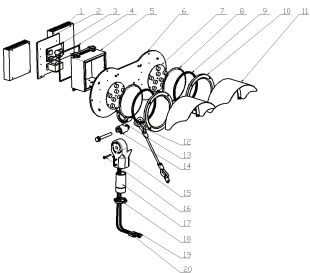
## Application/Use

I、II、III Type Runway Guard Light

## Features

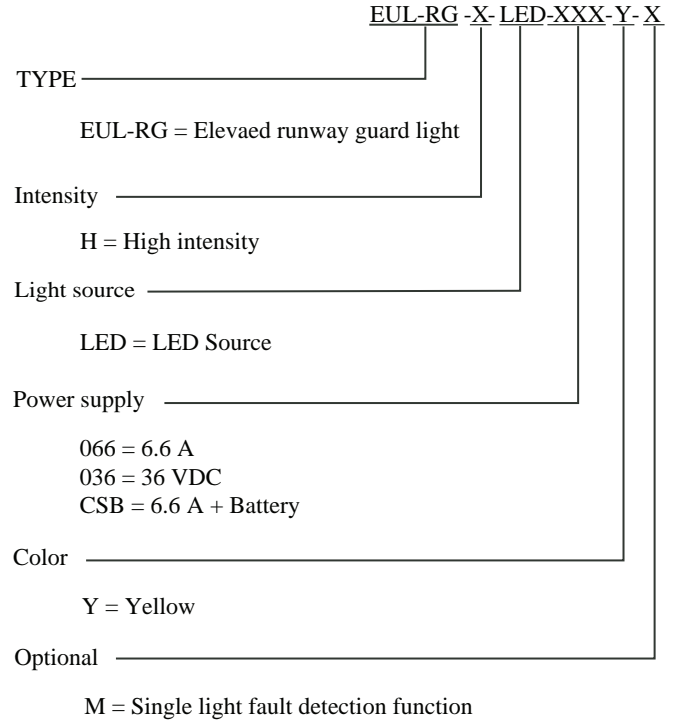
- Comply with ICAO chromaticity and photometric requirements, alternately illuminated at the rate of 45-50 flashes per minute
- Strict LED color management ensures color consistency
- Long life, energy saving and maintenance free of LED light will bring great economic benefits to customers
- Glass equipped with a visor provides anti-dazzle prevention for pilots at a close range
- The control circuit design with multiple protection functions to ensure reliability service
- Compact structure and attractive appearance, with small windward area and strong ability against the gales
- Split-type lighting fixture with lamp holder of fully enclosed structure
- The main body is made of aluminum alloy with anti-corrosion surface, all fasteners are made of stainless steel, suitable for harsh environment application
- High-precision parts and components machining to ensure all dimensional quality and precision
- Forged frangible device with precise machining, complying with FAA standards, ensuring good stability and reliability
- IP65-grade protected from total dust ingress
- The calibrator can be installed directly on the body with high precision`
- Equipped with chains to prevent lights which have broken from their mounting from blowing away

## Construction



- |                            |                        |
|----------------------------|------------------------|
| 1.Heating panel            | 16.Adjusting pin       |
| 2.Electric box cover plate | 17.Flange              |
| 3.Control Board            | 18.Nut                 |
| 4.Electric box gasket      | 19.Style7 Plug         |
| 5.Electric box             | 20.Style6 socket       |
| 6.Front panel              | 21.Locking hoop        |
| 7.LED assembly             | 22.Holder              |
| 8.Optical cover            | 23.Unit box            |
| 9.Optical cover gasket     | 24.Insulating board    |
| 10.Front cover             | 25.Battery             |
| 11.Visor cover             | 26.Unit box cover      |
| 12.Chain                   | 27.Protective tube     |
| 13.Connector               | 28.Battery fixed plate |
| 14.Connection column       | 29.Terminal board      |
| 15.Retainer                | 30.Hoop slot           |

## Ordering Information



\* Please describe the installation of the lamps and lanterns in detail with your order  
Spare parts and accessories need to be ordered separately and order number is required with your order.

## Installation

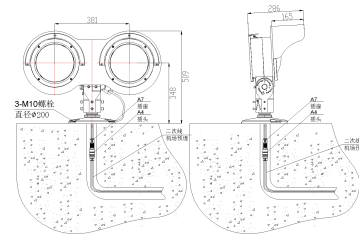


Fig 1. On flange

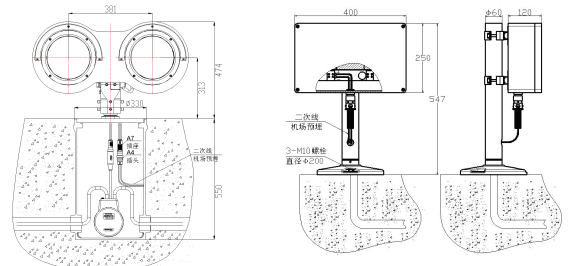


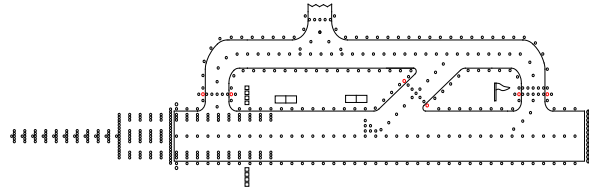
Fig 2. On 12" deep base

Fig 3. Battery unit box on flange

\* Detailed installation information refer to the product instructions

■ EUL-RG-LED

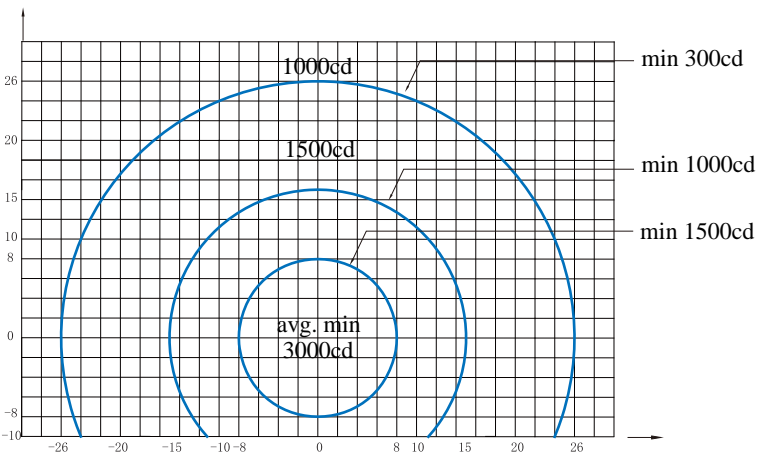
■ LED Elevated Runway Guard Light



## Specifications

Power supply	066		036	CSB	
ITF Power	45W		-	300W	
Power consumption	Primary	Secondary	50W	Primary	Secondary
	33VA	43VA		130VA	142VA

## Photometric Data



EUL-RG (Yellow), ICAO Figure A2-25, FAA L-804

Application		Main Beam		Color	Required min avg. cd	Actual avg. cd
		H	V			
EUL-RG-LED	ICAO Figure A 2-25/ FAA L-804	±8°	±8°	Yellow	3000	3377

## Spare Parts

Struc No.	Part Name	Order No.	Description
3	Control Board	945545	Control Board of LED Guard Light
4	Electric box gasket	41122	O - ring gasket 222.5*6
7	LED assembly	979244-Y	LED assembly 170 yellow
8	Optical cover	3110B	Glass (200)
9	Optical cover gasket	41178	Glass gasket (200)
17	Flange	46362	Flange 120*6
19	Style 7 plug	70708	Style 7 double core socket (component)-flat type L750
29	Style 6 Plug	HT70603	Secondary Cable Connector-A6 Double core plug(Flat Type)-High Temperature resistance
22	Holder	24263	Holder 530 (Sequency Flashing Light)
25	Battery	LC-CA1216	valve regulated lead acid battery
27	Protective tube	Fuse 6×30×15A	15A fuse
	Transformer	79130	Transformer BG40

## Accessories

	Description	Order No.
1	Flange (10 inches)	FL-10
2	Flange (12 inches) G2 Screw	FL-12-X-G2
3	Isolation Transformer (45 W)	ITF-045-066
4	Isolation Transformer (200 W)	ITF-200-066
5	Secondary Calbe connector style 7	REC 7
6	Secondary Calbe connector style 4	REC 4

1 elevated light      Size: 600×400×500 mm<sup>3</sup>  
 Unit net weight:21.8 kg      Gross weight: 25.8 kg

## Packing Data