



Compliance with Standards

CAAC: AC-137-CA-2015-03
 SAC: GB/T 7256
 ICAO: Annex 14, Volume I
 IEC: TS 61827
 FAA: AC 150/5345-46
 NATO: STANAG 3316

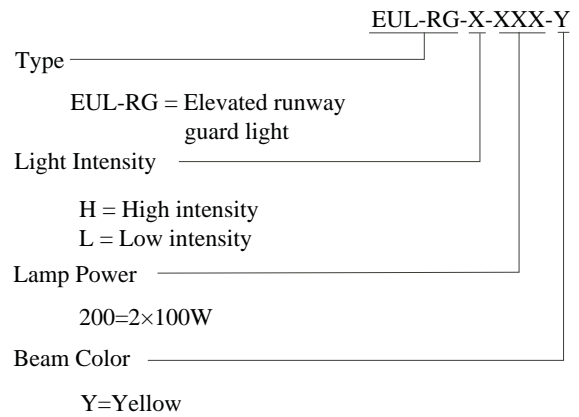
Application/Use

Runway guard light

Features

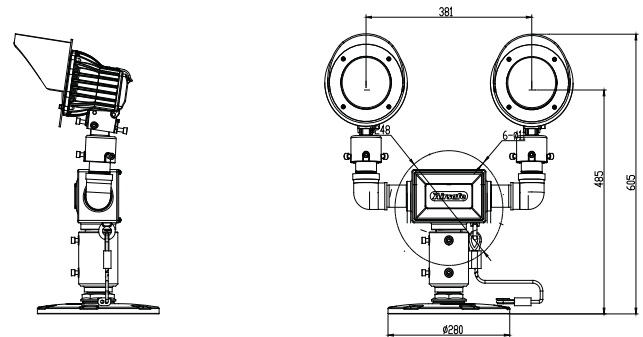
- Comply with ICAO chromaticity and photometric requirements, alternately illuminated at the rate of 45-50 flashes per minute
- Filter with improved coating process, featuring good transmittance, high bonding and excellent thermo stability
- International standard PK30D preset focus bulb with accurate positioning and premium light distribution precision
- Self-alignment optical component without need of recalibration when replacing bulb as well as optical components
- Glass equipped with a visor provides anti-dazzle prevention for pilots at a close range
- Proprietary reflector design, cold light cup processing, temperature variations will not cause any cracks in the glass and filter
- The control circuit design with multiple protection functions to ensure reliability service
- Compact structure and attractive appearance, with small windward area and strong ability against the gales
- Split-type lighting fixture with lamp holder of fully enclosed structure
- The main body is made of aluminum alloy with anti-corrosion surface, all fasteners are made of stainless steel, suitable for harsh environment application
- High-precision parts and components machining to ensure all dimensional quality and precision
- Forged frangible device with precise machining, complying with FAA standards, ensuring good stability and reliability
- IP65-grade protected from total dust ingress
- The fixture can be connected to both one or two-inch frangible tube, which ensures convenient and secure installation.
- The calibrator can be installed directly on the body with high precision
- Equipped with chains to prevent lights which have broken from their mounting from blowing away
- Tool free maintenance, easier to disassemble, and to replace the bulb
- Interchangeable, modular-designed components, easy to replace

Ordering Information



* Please provide detailed installation info while ordering, parts and accessories should be ordered separately specific with order no.

Dimensions



Installation

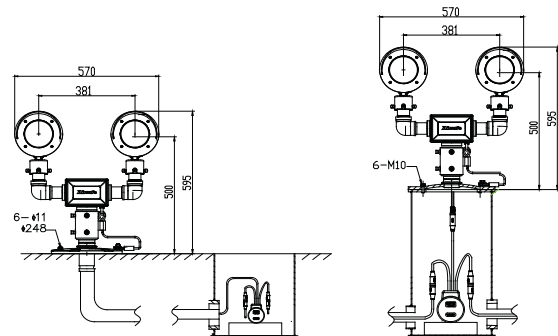
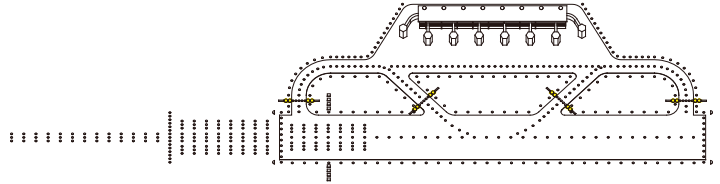


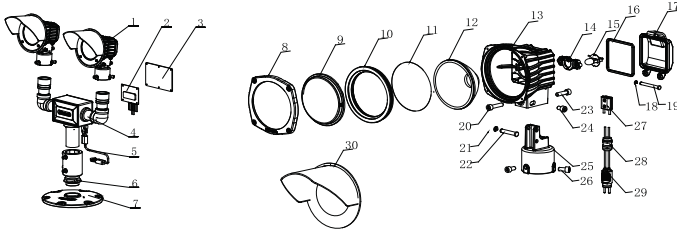
Fig 1. On 12" deep base

Fig 2. On ground with base plate

* Please find detailed information in installation manual



Construction

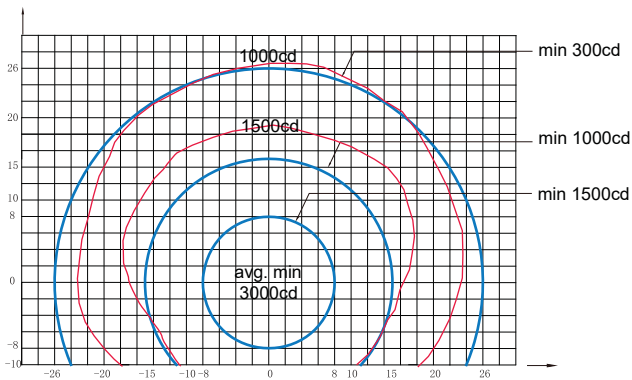


- | | | |
|------------------|--------------------|---------------------|
| 1.head assy | 11.optical filter | 21.washer |
| 2.control panel | 12.reflector | 22.hinge pin |
| 3.cover plate | 13.head assy | 23.adjusting screw |
| 4.holder | 14.lamp holder | 24.lock screw |
| 5.chain | 15.lamp | 25.lamp body pallet |
| 6.frangible stem | 16.seal gasket | 26.set screw |
| 7.flange | 17.rear cover | 27.lamp socket |
| 8.front cover | 18.washer | 28.water joint |
| 9.front glass | 19.hinge pin | 29.plug |
| 10.seal gasket | 20.adjusting screw | 30.visor |

Light Source

Illuminant: Two 100W/6.6A Pk30d prefocus halogen lamps.

Photometric Data



EUL-RG (Yellow), ICAO Figure A2-25, FAA L-804

Application		Main Beam		Color	Required min avg. cd	Actual avg. cd
		H	V			
EUL-RG	ICAO Figure A 2-25/ FAA L-804	±8°	±8°	Yellow	3000	4871

Packing Data

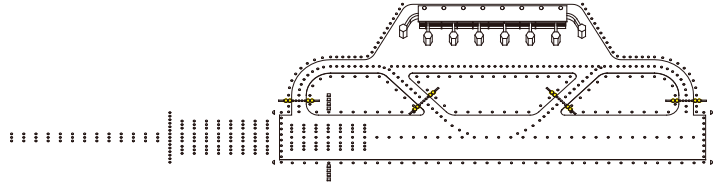
1 elevated light Size: 220×220×265 mm³
 Unit net weight: 1.91 kg Gross weight: 2.33 kg

Spare Parts

Struc No.	Part Name	Order No.	Description
1	Light head Assy	EUL-RG-Y-01	EUL-RG-Y-01
2	Control Board	45544	Control Board of Guard Light
6	Frangible assy of guard light	924251	2 Inches Sleeve Frangible Assy (Heavy Type)
7	Flange	FL-10	Flange 240 (G2-H35)
9	Optical Cover	31108	Front Glass JJD
10	Optical Cover Gasket	41110	Front Cover sealing components Rubber strip
11	Filter	31317-Y	Filter (Coating Film) 115- Yellow
12	Reflector	31109	Front Glass JJD
14	Lamp Holder	945518	Elevated light Lamp Holder Lamp Holder assy for PK30D
15	Lamp	L64341	Prefocused halogen lamp 100W 6.6A
16	Lamp Body Gasket	41111	Back Cover Sealing Gasket
27	Lamp Socket	41221	Lamp Socket
28	Waterproof Gland	48401	Metal Waterproof Gland MG20×1.5
29	Style 6 Plug	HT70603	Secondary Cable Connector-A6 Double core plug(Flat Type)-High Temperature resistance
	Hinge	945519	Back Cover Hinge (Assy)

Accessories

	Description	Order No.
1	Flange (10 inches)	FL-10
2	Flange (12 inches) G2 Screw	FL-12-X-G2
3	Frangible Coupling (2 inches)	924251
4	Isolation Transformer (200 W)	ITF-200-066
5	Secondary Calbe connector style 7	REC 7
6	Corrector	954211
7	Isolation Transformer Box	TJB-12



Accessories

Description	Order No.
flange 240mm	276A1
flange 304mm (FAA standard)	27683
2" sleeve frangible stem assy	924252
2" frangible stem	24261
100-watt isolation transformer	ITF-100-066
secondary cable connector - style 7 socket	70703
calibrator assy	954211

EUL-RG

3

3