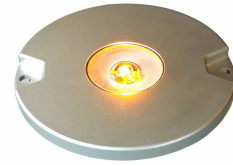


■ TOIL-08-LED

■ LED Taxiway Intersections Light(8" 6mm)



Compliance with Standards

CAAC: AC-137-CA-2015-01 & 03
 SAC: GB/T 7256
 ICAO: Annex 14, Volume I
 IEC: TS 61827
 FAA: AC 150/5345-46 & EB NO.67
 NATO: STANAG 3316

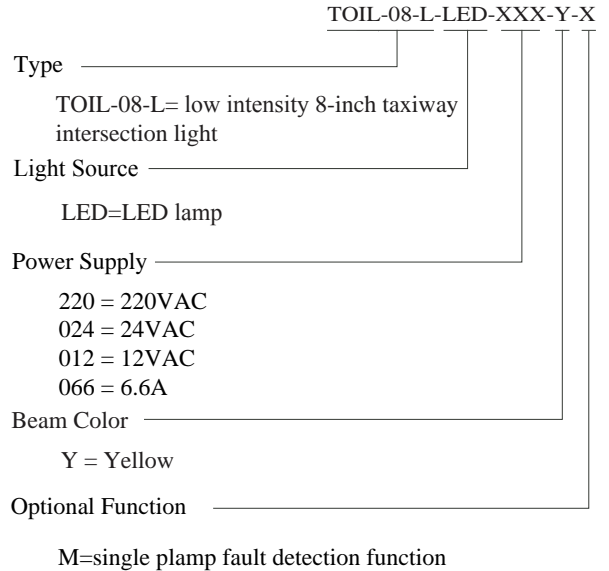
Application/Use

Taxiway and Apron

Features

- The LED light is featured by long working life, energy conversation, maintenance-free, which brings enormous economic benefits to customers
- Specially-designed LED lens to greatly improve luminous efficacy of LED lights
- Proprietary prism structural design and manufacturing process to ensure excellent optical performance
- Strict LED color management to ensure premium color consistency
- Light distribution consistent with that of halogen lights, complying with FAA standards
- Proprietary driver circuit and thermal management solution, which greatly improves the reliability and service life of light fixture
- Power factor above 0.9, which minimizes the power network disturbance
- Optional function of single lamp failure detection, which enables the light to simulate open circuit of halogen lamp when the LED light is damaged
- Specially-designed structure, protruding only 6.35mm above finish grade
- Upper cover with flat out-light surface to prevent from water buildup and ensure high luminous efficiency
- Upper cover with equal-strength design and forging craft, which has premium mechanical and barrier capacity, and shock resistance ability
- Smooth and sleek upper cover to prevent from damaging aircraft tires
- Lighting fixture made of highly conductive aluminum alloy, which ensures good heat dispersion
- Main structure made of corrosion-resistant aluminum alloy with special anodic oxidation treatment, all fasteners are made of stainless steel, suitable for harsh environment application
- High-precision parts and components machining to ensure all dimensional quality and precision
- IP68-grade, that can withstand inner pressure of up to 138kpa or water pressure generated from aircrafts' impact on the optical window
- Interchangeable, modular-designed components, applicable for all kinds of 8-inch omni-directional in-pavement taxiway lights(LED type)

Ordering Information



* Please provide detailed installation info while ordering, spare parts and accessories should be separately ordered with specific order no.

Installation

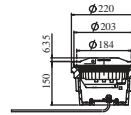


Fig 1. On 8'' shallow base

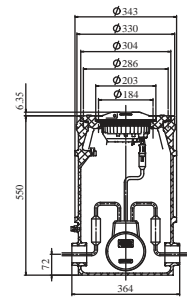
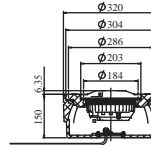


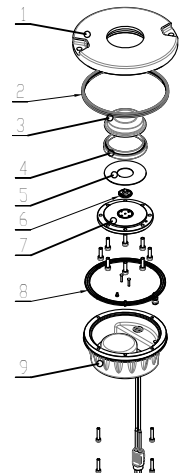
Fig 2. On 12'' shallow base w/ 12''/8'' adapter ring

Fig 3. On 12'' deep base w/ 12''/8'' adapter ring

* Please find detailed information in installation manual

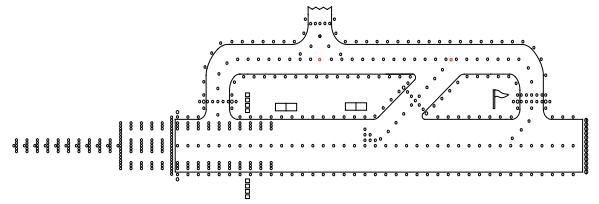
Structure

1. upper cover
2. lighting fixture gasket
3. prism
4. prism gasket sleeve
5. prism gasket
6. LED lamp assy
7. prism pressing bracket
8. light body gasket
9. inner cover assy



TOIL-08-LED

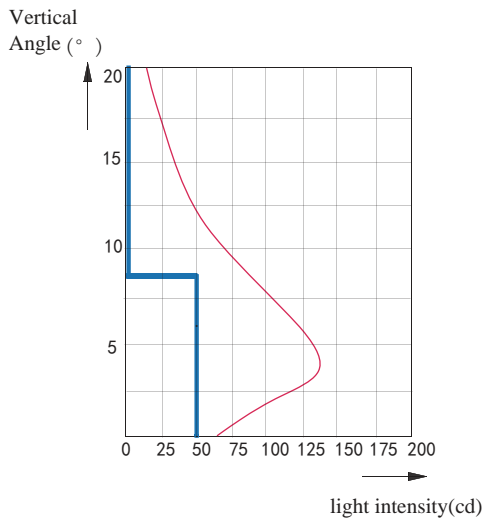
LED Taxiway Intersection Light (Ø 6mm)



Specifications

Power: 20VA
Power factor: ≥ 0.9

Photometric Data



TOIL-08-L-LED (Yellow), FAA L-852E

Application	Main Beam		Color	Required min. cd	Actual min. cd
	H	V			
TOIL-08-L-LED FAA L-861E	360°	1°-8°	Yellow	50	61

Packing Data

1 lights w/o base Packing size: 210×210×130mm³
Unit net weight: 3.4 kg Gross weight: 3.5 kg
1 light w/ 8" shallow base Packing size: 240×240×180mm³
Unit net weight: 6.4 kg Gross weight: 6.5 kg

Spare Parts

Struc No.	Part Name	Order No.	Description
2	light fixture gasket	41107	Seal belt(standard)
3	prism	31113	omnidirectional(LED1-6°)
4	prism gasket sleeve	43115	LED omnidirectional prism gasket sleeve
5	prism gasket	43313	prism gasket(66x51) LED
6	LED lamp assy	979263-Y	LED lamp assy 1P-0 Yellow(omnidirectional)
7	prism pressing bracket	43217	prism pressing bracket 108
8	light body gasket	41141	O-ring 137×2

Accessories

No.	Order No.	Description
1	SB-08	8"shallow base
2	SB-12	12"shallow base
3	DB-12	12" deep base
4	AR-12/08	12"-8" adaptor ring
5	951101	8"lamp handle
6	ITF-015-066	15-watt isolation transformer
7	REC7	moulded type secondary cable receptacle style 7